



SG GROUP

CONSTRUCTION & ROCK
SOLUTION

**INDIAN DEALER
& TRADERS**

RS07 | SKID STEER LOADER WITH CAB AND ATTACHMENTS



RS07: EXCLUSIVE FEATURES

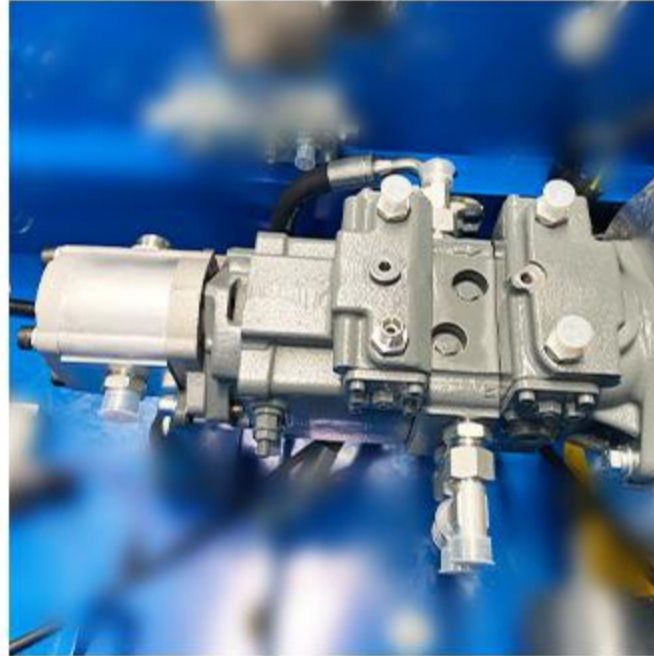
With a comfortable cab, powerful hydraulics, and rugged design, RIPPA's RS07 Skid Steer Loader delivers outstanding performance on any jobsite while ensuring operator comfort and control.



ENGINE

**KUBOTA D1105 ENGINE,
RATED POWER 18.2KW
(24.4HP)**

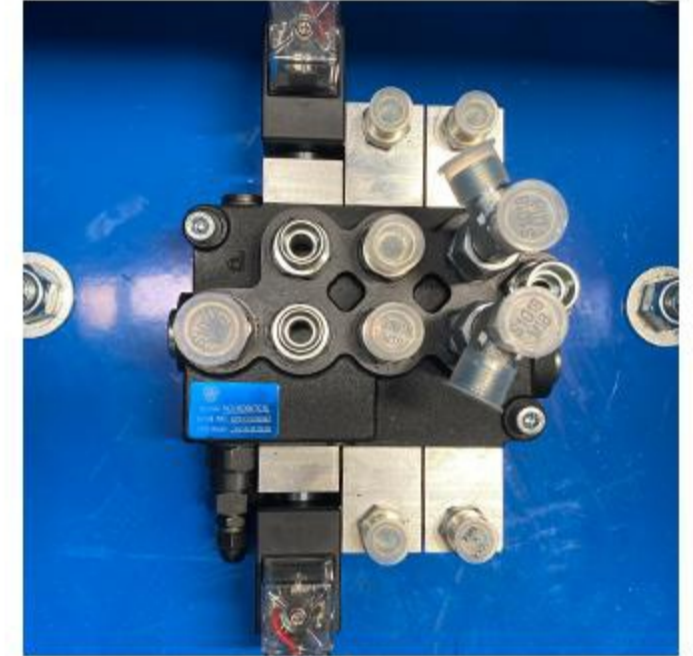
- High-Efficiency power output
- Low fuel consumption
- Low noise & vibration



PUMP

**FOUR-PUMP
HYDRAULIC SYSTEM**

- Two dual closed-circuit pumps, an internal charge pump, and a gear pump
- Flow rates of 48 + 48 + 28.2 + 48L/min
- Smooth operation, excellent compound action



VALVE

**PILOT MULTI-WAY
VALVE**

- Flexible configuration for different attachments
- Responsive handling with smooth multi-tasking.
- Eco-friendly and fuel-saving, reducing overall operating costs
- Double pilot operation improves work efficiency.



RS07 RIPPA



TRACK

INTEGRATED TRACK DESIGN

- Optional tracked or wheeled version
- Smooth driving with little vibration
- Easily handle slopes and complex working conditions



POWER & PERFORMANCE





KEY FEATURES



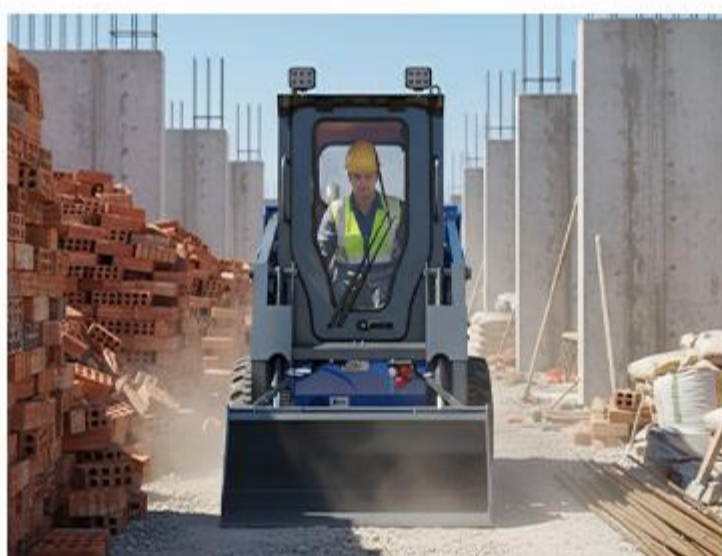
- » Kubota D1105 engine, rated at 18.2 kW (24.4 HP), delivers strong power with low fuel consumption, reliable performance, and easy maintenance.
- » Hydraulic pump directly connected to the engine reduces maintenance.



- » Combining fast loading with efficient operation, with powerful hydraulics and precise control, you can easily move heavy objects, saving time and labor. The maximum unloading height 1725 mm, and the maximum loading capacity 670 kg.



- » 1386 kg(3056 lb) combined with 172.2 L/min(45.5 gpm) main pump hydraulic flow make for a powerful and productive skid steer loader.



- » The 1000mm compact body allows easy maneuvering through tight spaces, making operations in confined areas smooth and efficient.
- » Best-in-class travel speed of 8 km/h (4.97 mph).



OPERATOR CONTROLS



KEY FEATURES



- » The spacious ergonomic cab has ample legroom and excellent all-round visibility, effectively reducing fatigue during long hours of operation.
- » The cab can be flipped up for easy entry, exit, maintenance and inspection.



- » Double pilot operating handles with integrated quick-change and horn button make operation convenient and efficient.
- » The control panel is equipped with multi-function buttons that can adjust functions such as fans and lights.





KEY FEATURES



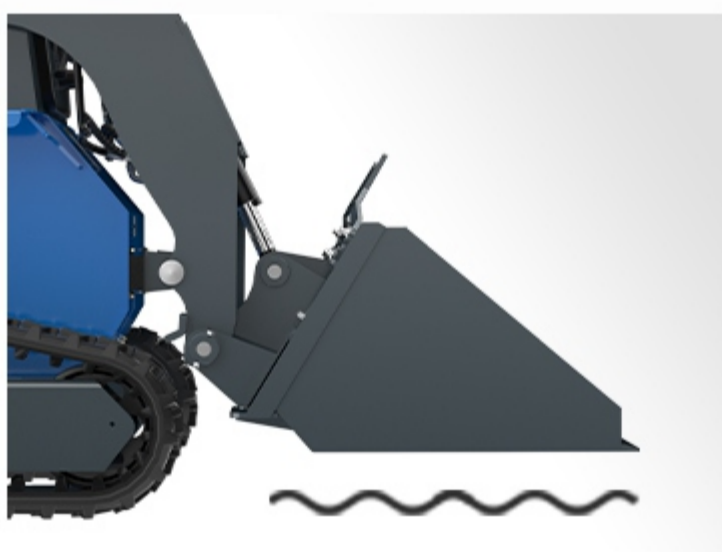
- » 1 group of 3 attachment oil circuits enables simultaneous and precise operation of multi-functional attachments.
- » Auxiliary hydraulic flow of 48 L/min (12.7 gpm) provides strong power to ensure efficient attachment operation.



- » The RS07 is available in both wheeled and tracked versions, making it easy to adapt to different terrains and working conditions.
- » The high-torque, low-speed travel motor can smoothly start and brake huge inertial loads, ensuring stable passage on complex terrain.



- » Warning lights improve safety and visibility, while outdoor lights ensure clear vision and precise work at night.



- » The floating bucket function allows the bucket to automatically adjust its angle as the ground rises and falls, keeping the bucket close to the ground during operation.
- » Suitable for cleaning, leveling and easily following uneven roads.

COMFORT & CONVENIENCE



KEY FEATURES



- » The lifting holes are sturdy in structure and reasonably located, making it easy to lift and load the whole machine safely.
- » The position of the lifting holes has been calculated based on the force to ensure stability.

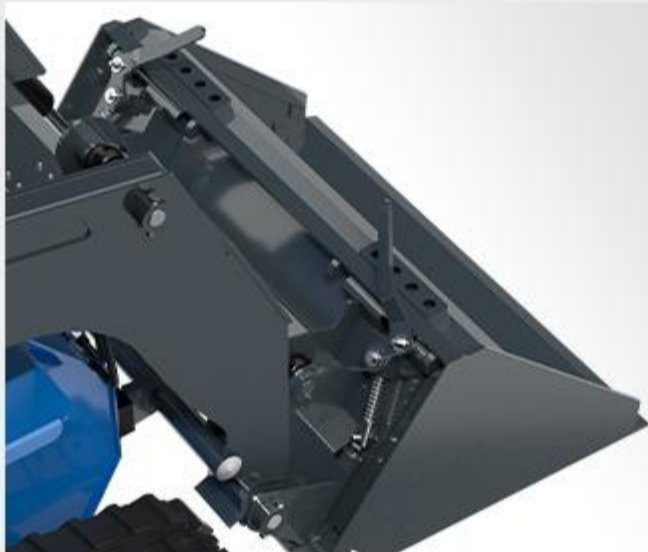


- » The cab wiper with an independent switch ensures clear visibility during rain or muddy operations, improving safety and operator comfort.





KEY FEATURES



- » The quick-change device can quickly and safely switch between various attachments
- » Regular inspection, lubrication and rust prevention maintenance can significantly extend its service life.



- » The radiator ensures that the engine and hydraulic system operate stably at a safe temperature through efficient cooling.
- » The exhaust pipe efficiently conducts heat away from the driver, improving operation safety.



- » The linkage arm locking device secures the lift arms during maintenance or transport, ensuring operator safety and preventing accidental movement.



- » The cab heating system delivers warm air to the interior of the vehicle, maintaining a comfortable temperature in cold conditions.



RIPPA ATTACHMENTS



PERFORMANCE MATCHED

When replacing auxiliary equipment such as trencher, stump grinder, log grapple, the process ensures you that the hydraulic requirements, weight, and width of your attachment matches your power unit's exact specifications.

Visit rippa.com



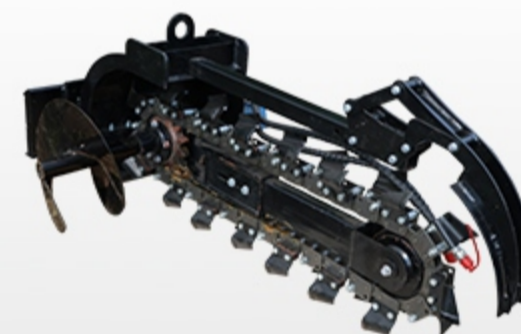
DIRECT DIGGING

- Digging depth: 800 mm
- Bucket capacity: 0.15 m³
- Number of hydraulic circuits: 1
- Length: 1.85 m, Width: 1.05 m, Height: 0.6 m
- Weight: 120 kg



ROCK BUCKET

- Bucket capacity: 0.35 m³
- Spill plate option available
- Length: 1.0 m, Width: 0.5 m, Height: 0.6 m
- Weight: 106 kg



TRENCHER

- Trenching width: 210 mm
- Trenching depth: 800 mm
- Chain tensioning method: Manual bolt
- Motor option: 40 L/min
- Length: 1.75 m, Width: 1.05 m, Height: 0.75 m
- Weight: 187 kg



STUMP GRINDER

- Grinding depth: 100 mm
- Grinding wheel diameter: 580 mm
- Number of teeth: 32
- Required hydraulic flow: 40 L/min
- Rotation speed: 2000 rpm
- Length: 1.2 m, Width: 1.1 m, Height: 1.05 m, Weight: 210 kg



ELECTRIC SWING-HEAD STUMP GRINDER

- Grinding depth: 200 mm
- Grinding wheel diameter: 580 mm
- Number of teeth: 32
- Swing function: Hydraulic adjustment
- Required hydraulic flow: 40 L/min
- Rotation speed: 2000 rpm
- Length: 1.2 m, Width: 1.1 m, Height: 1.05 m, Weight: 210 kg



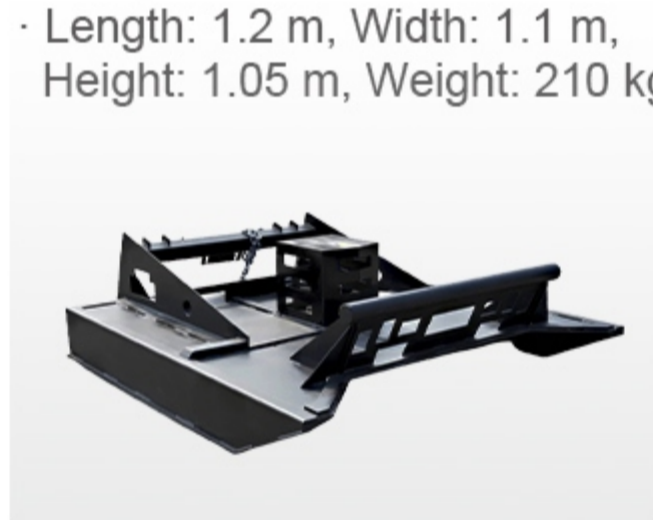
ROTATING LOG GRAPPLE

- Rotation angle: 360°
- Control method: Hydraulic



ENCLOSED SWEEPER

- Sweeping width: 1200 mm
- Brush material: Nylon steel wire
- Brush speed: 250 rpm
- Hydraulic motor model: 2K-160
- Collection box capacity: 0.3 m³
- Length: 1.55 m, Width: 1.4 m, Height: 0.65 m, Weight: 180 kg



MOWER

- Cutting width: 1100 mm
- Blade type: Straight blade
- Number of blades: 3
- Protective plate: Equipped
- Cutting height adjustment: 50 mm
- Length: 1.45 m, Width: 1.4 m, Height: 0.85 m, Weight: 193 kg



ROLLER

- Roller diameter: 800 mm
- Length: 1.45 m, Width: 0.95 m, Height: 0.8 m
- Weight: 160 kg





BRUSH CUTTER

- Cutting diameter: 1100 mm
- Blade material: Manganese steel
- Required hydraulic flow: 40 L/min
- Suitable vegetation: Shrubs with a diameter less than 30 mm
- Length: 1.6 m, Width: 1.3 m, Height: 0.5 m, Weight: 175 kg



SNOW BLOWER

- Throwing distance: 6 m
- Adjustable snow throwing direction
- Snow collection width: 1100 mm
- Auger diameter: 60 mm
- Length: 1.2 m, Width: 1.1 m, Height: 1.05 m, Weight: 156 kg



DOZER BLADE

- Maximum bulldozing angle: 45°
- Material: 45 steel
- Length: 1.25 m, Width: 0.7 m, Height: 0.8 m
- Weight: 140 kg



ROTARY TILLER

- Working width: 70 mm
- Tilling depth: 200 mm
- Rotor speed: 250 rpm
- Number of blades: 20
- Required hydraulic flow: 40 L/min
- Length: 1.3 m, Width: 0.85 m, Height: 0.66 m, Weight: 110 kg



HIGH DUMP BUCKET

- Bucket capacity: 0.35 m³
- Maximum dumping angle: 90°
- Dumping height: 3000 mm
- Material: Q235



4 IN 1 BUCKET

- Bucket capacity: 0.3 m³
- Maximum opening width: 800 mm
- Operation mode: Hydraulic
- Number of hydraulic cylinders: 2
- Material: Q235
- Length: 1.35 m, Width: 0.68 m, Height: 0.65 m, Weight: 155 kg



MIXING BARREL

- Capacity: 0.3 L
- Required hydraulic flow: 40 L/min
- Weight: 125 kg
- Length: 0.8 m, Width: 1.05m, Height: 0.7 m



RIPPER

- Number of teeth: 3
- Replaceable tooth tips
- Tooth material: Alloy steel
- Maximum loosening depth: 300 mm



SWEEPER

- Sweeping width: 1200 mm
- Brush material: Nylon steel wire
- Brush speed: 250 rpm
- Hydraulic motor model: 2K-160
- Length: 1.55 m, Width: 1.15 m, Height: 0.9 m, Weight: 140 kg



FORK

- Length: 1.2 m, Width: 0.72 m, Height: 0.3 m
- Rated load: 1000 kg
- Overflow protection device
- Fork width adjustment method: Manual
- Adjustable fork distance: 0–700 mm



SIDE-SHIFT PALLET FORK

- Rated load: 1000 kg
- Side shift range: 300 mm
- Adjustment method: Hydraulic
- Length: 1.3 m, Width: 0.72 m, Height: 0.4 m
- Weight: 120 kg



LOG GRAPPLE

- Grab capacity: 0.5 m³
- Opening width: 700 mm
- Length: 1.15 m, Width: 0.85 m, Height: 0.8 m
- Weight: 165 kg



ROTARY DRILL

- 800 mm length, 150 mm diameter
· Length: 1.1 m, Width: 0.6 m, Height: 0.45 m
· Weight: 125 kg
- 800 mm length, 200 mm diameter
· Length: 1.1 m, Width: 0.6 m, Height: 0.45 m
· Weight: 127 kg
- 800 mm length, 220 mm diameter
· Length: 1.1 m, Width: 0.6 m, Height: 0.45 m
· Weight: 127 kg
- 800 mm length, 250 mm diameter
· Length: 1.1 m, Width: 0.6 m, Height: 0.45 m
· Weight: 129 kg
- 800 mm length, 300 mm diameter
· Length: 1.1 m, Width: 0.6 m, Height: 0.5 m
· Weight: 135 kg
- 800 mm length, 400 mm diameter
· Length: 1.1 m, Width: 0.6 m, Height: 0.7 m, Weight: 145 kg



TRACTION DEVICE

- Length: 0.1 m, Width: 0.5 m, Height: 0.55 m, Weight: 42 kg



HORIZONTAL LOG SPLITTER

- Length: 2.3 m, Width: 0.5 m, Height: 0.7 m, Weight: 142 kg



LIFTING DEVICE



BACKHOE



LOG SPLITTER



WOOD CHIPPER



VIBRATORY PLOW



SOIL RENOVATOR

· Length: 1.3 m, Width: 0.6 m,
Height: 0.6 m

· Weight: 155 kg



MIXING BUCKET

· Length: 1.2 m, Width: 0.85 m,
Height: 0.65 m

· Weight: 145 kg



LAND LEVELER

· Length: 1.38 m, Width: 1.3 m,
Height: 0.55 m

· Weight: 55 kg



BREAKER

· Length: 1.1 m, Width: 1.1 m,
Height: 0.55 m

· Weight: 140 kg



TRENCH FILLER

· Length: 1.3 m, Width: 0.6 m,
Height: 0.6 m

· Weight: 120 kg



GRAPPLE BUCKET

· Length: 1.25 m, Width: 0.85 m,
Height: 0.8 m, Weight: 150 kg



STUMP BUCKET



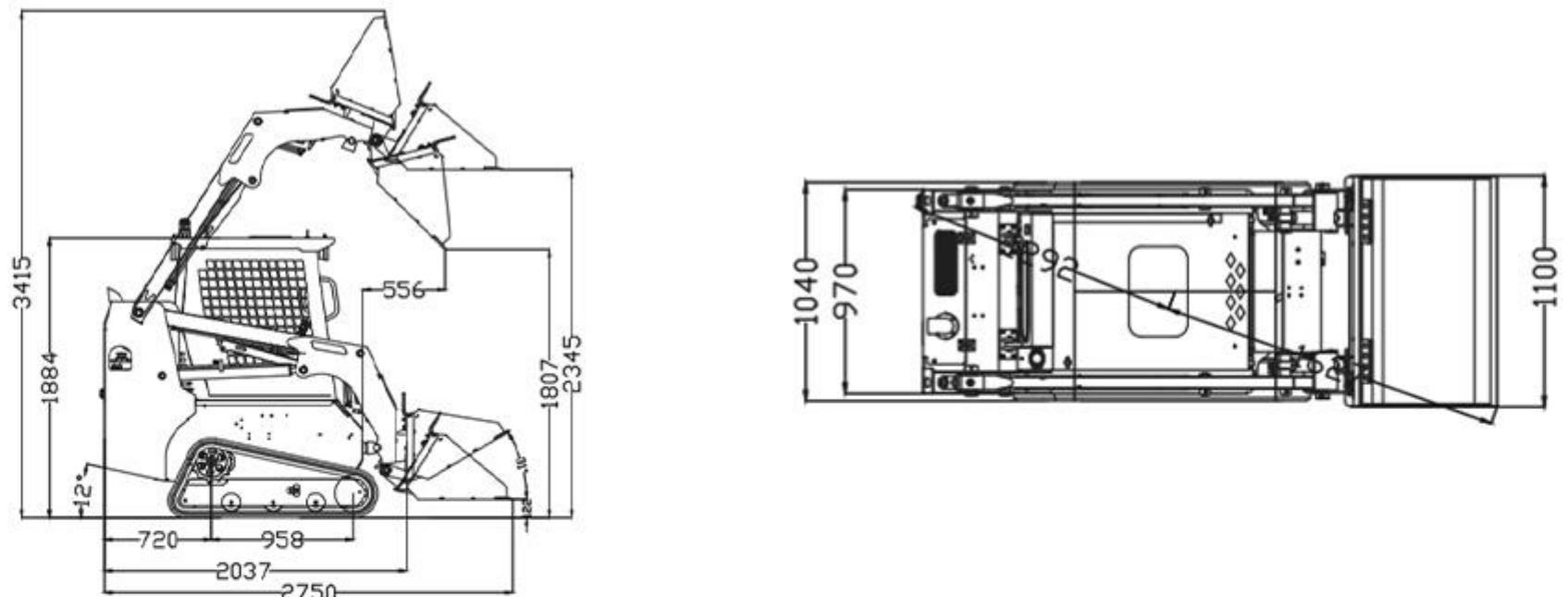
LAWN AERATOR



LAND CLEARING RAKE



DETAILED PARAMETER CONFIGURATION

Basic performance parameter		
Machine working weight	1386kg	3056 lb
Bucket capacity	0.16m ³	5.7ft ³
Rated load mass (safe load)	300kg	661.4 lb
Maximum load mass	670kg	1477.1 lb
Travel speed low/high speed	0-8km/h	0-4.97mph
Gradeability	30%	30%
Ground pressure	95.87kpa	13.9psi
Maximum unloading height	1725mm	68.0in
Maximum loading height	2260mm	89.0in
Maximum unloading distance	508mm	20.0in
Minimum ground clearance	176mm	6.9in
Body		
Transport length - with bucket (mm)	2750mm	108.4in
Transport length - without bucket (mm)	2037mm	80.3in
Transport width (mm)	1100mm	43.3in
Transport height (mm)	1884mm	74.2in
Bucket width (mm)	1100mm	43.3in
Engine		
Engine brand	Kubota	Kubota
Engine model	D1105	D1105
Maximum horsepower	24.4hp	24.8ps
Maximum power	18.2kw	18.2kw
Maximum speed	3000rpm	3000rpm
Displacement	1.123L	0.297gal
Number of cylinders	3	3
Cooling method	Water cooling	Water cooling
Engine oil change amount	4L	1.057gal
Fuel form	Diesel	Diesel
Fuel grade	0/-10	0/-10
Theoretical fuel consumption	1.3-1.5L/h	0.34-0.40gal
Hydraulic system		
Main pump type/model	Closed pump V90C23HT1/RNB2S12KA1-LP01	
Main pump brand	Hengli	
Gear pump brand	Tianjin Walking	
Multi-way valve	Pilot multi-way valve	
Travel motor brand	Hengli	
		
Unit: mm		

> WE ARE S.G GROUP INDIA

we are located in Pune's Industrial Area, in India. This is a well-trusted Company that imports high-profile construction machinery and sales them. We are known and trusted for providing the customers of India the best sales of construction machines and after-sales services in India.

This is a number one company in trading of construction machinery company.

We are the Best solution for you. The company's employees are energetic and enterprising, constantly creating the legend and fame of the SG GROUP



Pune-Mumbai Road, Mehata Chambers Kasarwadi, Pune - 411 034

E mail : info@sggrouppune@gmail.com / [sggrouppune@gmail.com](mailto:info@sggrouppune@gmail.com)

Mob : 9850100284 / 9881820284

Web : www.sggrouppune.com

GST No : 27BAEPS0979R1ZP